

La Cerdanya network of trails

It's a network with more than 500 kilometres of arranged and signposted paths designed to get to know the region by hiking. The network's design allows each user to choose their itinerary, so there are endless possibilities. Each trail corresponds to a number that you will find on the direction signs located at all intersections between trails and at the starting points. Yellow rectangular marks will allow you to easily follow the trails to the crossroads. In Fontanals de Cerdanya you can enjoy 58 kilometres of trails that will allow you to know the most attractive places in the village, from the banks of the River Segre on the plain/flatlands/lowlands, to the black pine forests of the high mountains.



Direction sign on a crossroads



Tracking and route guides



Follow-up sign posts with yellow paint

Warnings and tips

WATER NOT TREATED

Most of the fountains in the municipality are not purified nor periodically analysed. Therefore, its health standards are not guaranteed.

EQUIP YOURSELF PROPERLY

- Make sure your physical conditions fits the trail you want to do by consulting the distances and slopes.
- Equip yourself properly.
- It is advisable to wear good shoes, food, water, a raincoat and sunscreen.
- If you use the Segre edge trails during summer, it's convenient to protect yourself from mosquitoes.

RESTRICTIONS TO MOTORIZED ACCESS

- In the mountains of the municipality of Fontanals de Cerdanya, the motorized circulation of vehicles is only allowed on the main forest roads. Respect the prohibition signs.
- The circulation of motorcycles and similar vehicles is generally prohibited throughout Catalonia for tracks and roads of less than 2 meters wide and off-piste.
- The maximum speed for unpaved roads and tracks is 30 km/h.
- You will find information signs about the roads where you can drive on the access roads to the mountain.

RESPECT THE WILDLIFE

- Don't yell, don't touch nests or dens and don't chase animals. Catching, capturing or disturbing wildlife is prohibited and punishable by up to €12,000 fines.
- If you bring dogs, you must control them or keep them tied up.

RESPECT THE LIVESTOCK

You may find cows, horses or sheep during your route. Animal husbandry is a traditional activity in our territory that helps maintain the landscape, biodiversity and prevent fires. Be respectful with the livestock and the farmers:

- Doors that are on the roads must be left closed.
- Keep dogs under control and tied up.
- Don't scare animals or make them run. Cross the areas as far of them as you can, without making any noise.
- Don't feed animals nor pet of baby animals (mothers could attack you).
- Don't carry bags in your hands (animals could think you are carrying salt to them and react abruptly).
- Don't approach shepherd dogs and act calmly and passively if you run into near them.

Routes and trails of Fontanals de Cerdanya



EN



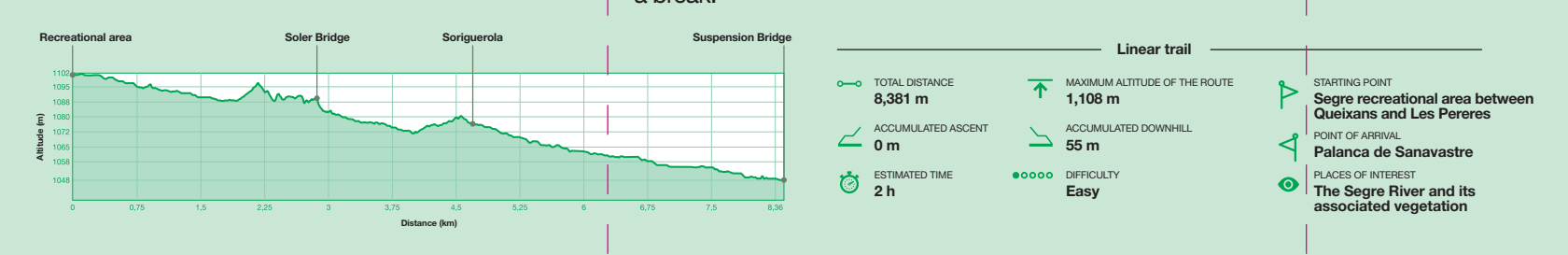
SEGRE ROUTE



Riparian vegetation

An itinerary of great beauty that allows you to discover the riparian forest in a walk with little difficulty.

The route begins in a recreational area, next to the river, between the villages of Queixans and Les Pereres. It runs west along the river bank. It crosses the 260 national road below, taking advantage of one of the sides of the bridge and it skirts an meadow area passing by the Soler Bridge and reaching the entrance of Soriguerola village. In this place there is a recreational area with games for children and you can see the Romanesque church of Sant Miquel de Soriguerola. The route continues along the River, where you will find different interpretive signs about the river and the riparian forest. Following the northern edge of Golf de Fontanals you will reach the suspension bridge of Sanavastre, where the route ends and some tables were installed so you can have a break.



ROMANESQUE ROUTE

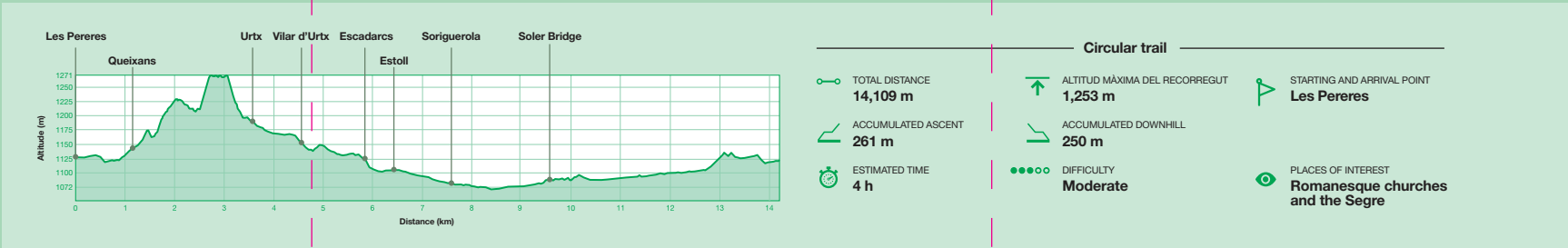


Sant Esteve de les Pereres

Discover the Romanesque churches of Fontanals de Cerdanya

The romaneseque route is a circular trail that allows you to discover on foot the 5 romaneseque churches in the area: Sant Esteve de les Pereres, Sant Cosme and Sant Damià de Queixans, Sant Martí d'Urtx, Santa Eulàlia d'Estoll and Sant Miquel de Soriguerola . It's a 14-kilometre route that connects all the villages in the municipality and goes into the

riparian forest of the Segre River. In each church you will find information about its history. It is recommended to start the route in Les Pereres and follow the signs for the route that takes us to Queixans, Urtx, Vilar d'Urtx, Escadarcos, Estoll and Soriguerola. After visiting the last church in Soriguerola, the route coincides with the one of the Segre, returning to Les Pereres by paths that run along the river. Meadows and forests dominated by alder trees and ashes alternate, until you reach Les Pereres again.

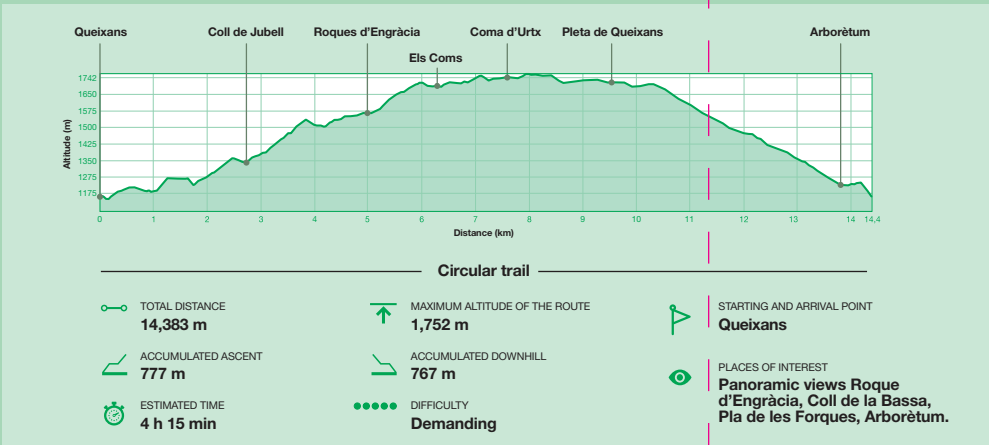


ROUTE THROUGH THE MOUNTAINS OF URTX AND QUEIXANS



Viewpoint Roques d'Engràcia

A physically demanding circular trail with more than 14 kilometres and 777 meters of ascent. It starts from the village of Queixans and climbs to the upper part of the village of Urtx, to the west, at the foot of the mountain. From there, begins an ascent that will take us into the highest forests and pasture lands of the municipality. During the journey you will enjoy magnificent panoramic views of Tossa d'Alp and the Cerdanya valley. Close to finishing the return, you will pass by the Queixans Arboretum, a botanical park with a representation of 126 tree species from the 5 continents.

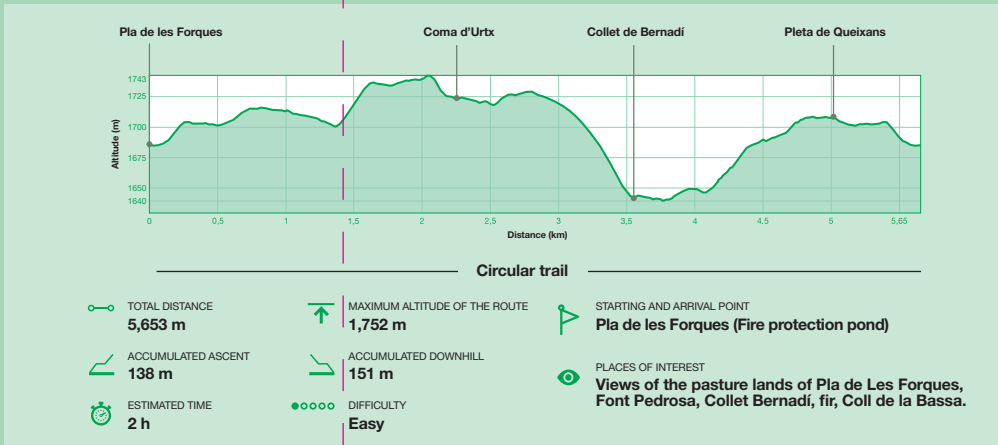


FAMILY ROUTE THROUGH THE MOUNTAINS

An itinerary of little difficulty to discover the forests and pasture lands of the Mountain of Queixans



Pla de les Forques



Routes through the municipality of Fontanals de Cerdanya

We propose four itineraries with different levels of difficulty to discover some of the most beautiful places of the municipality. Each route is signposted with specific banners with their name and emblem.



SEGRE ROUTE



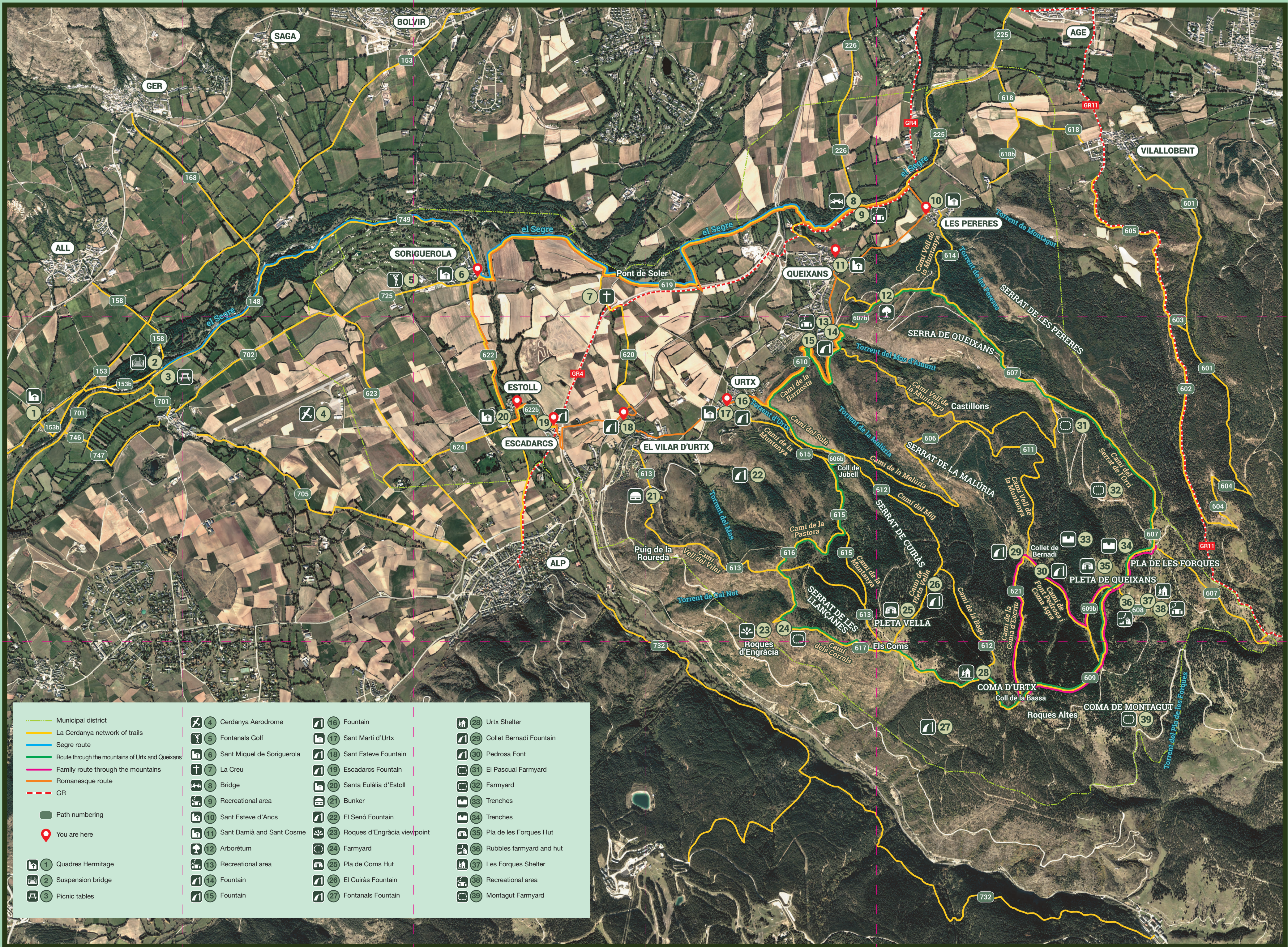
ROMANESQUE ROUTE



ROUTE THROUGH THE MOUNTAINS OF URTX AND QUEIXANS



FAMILY ROUTE THROUGH THE MOUNTAINS



----- Municipal district

----- La Cerdanya network of trails

----- Segre route

----- Route through the mountains of Urtx and Queixans

----- Family route through the mountains

----- Romanesque route

----- GR

Path numbering

You are here

1 Quadres Hermitage

2 Suspension bridge

3 Picnic tables

4 Cerdanya Aerodrome

5 Fontanals Golf

6 Sant Miquel de Soriguerola

7 La Creu

8 Bridge

9 Recreational area

10 Sant Esteve d'Ancs

11 Sant Damià and Sant Cosme

12 Arborètum

13 Recreational area

14 Fountain

15 Fountain

16 Fountain

17 Sant Martí d'Urtx

18 Sant Esteve Fountain

19 Escadarcs Fountain

20 Santa Eulàlia d'Estoll

21 Bunker

22 El Senó Fountain

23 Roques d'Engràcia viewpoint

24 Farmyard

25 Pla de Coms Hut

26 El Cuiràs Fountain

27 Fontanals Fountain

28 Urtx Shelter

29 Collet Bernadí Fountain

30 Pedrosa Font

31 El Pascual Farmyard

32 Farmyard

33 Trenches

34 Trenches

35 Pla de les Forques Hut

36 Rubbles farmyard and hut

37 Les Forques Shelter

38 Recreational area

39 Montagut Farmyard